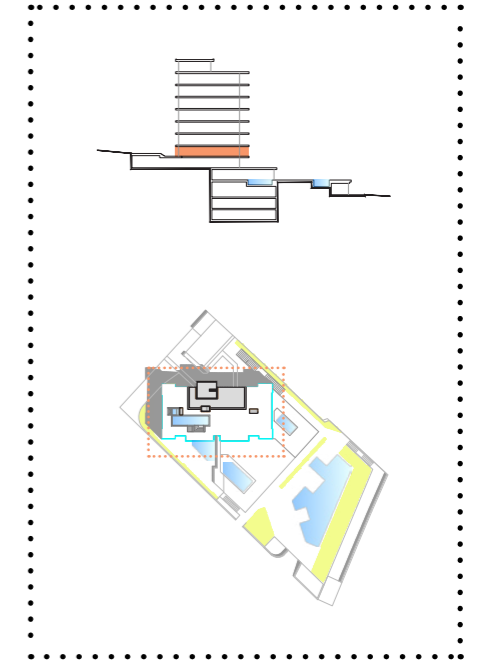
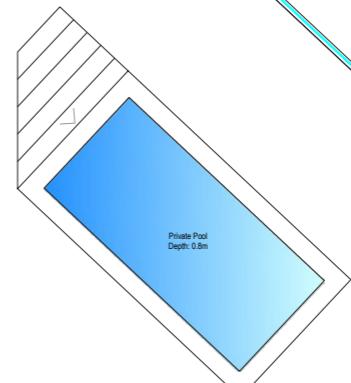
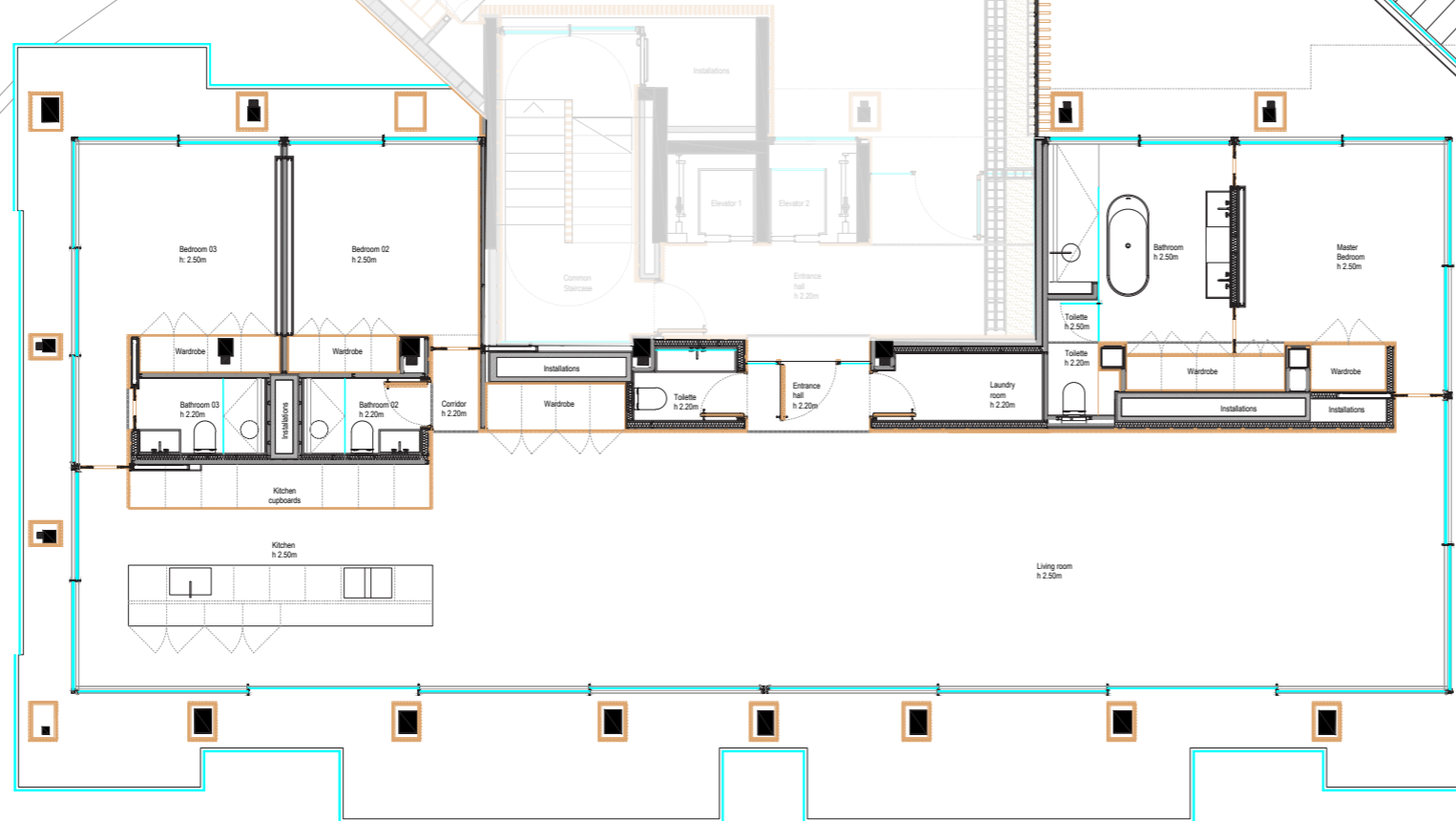


# SECOND FLOOR APARTMENT 200 GLOBAL VIEW

Exclusive  
Parking  
for  
Apartment 200

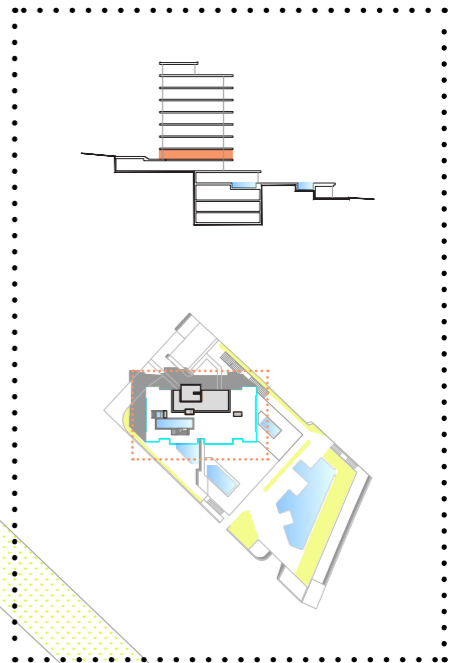
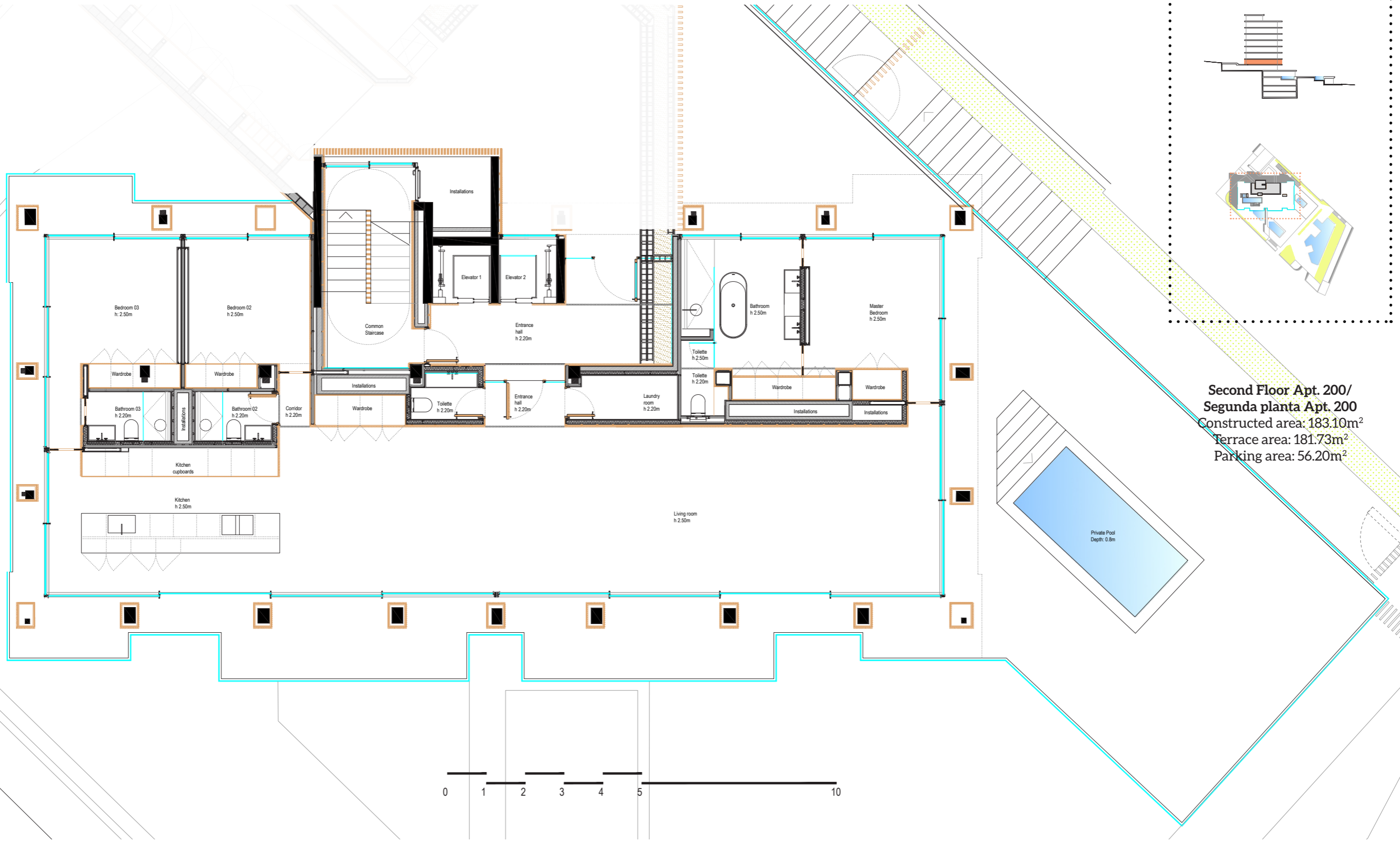


**Second Floor Apt. 200/  
Segunda planta Apt. 200**  
Constructed area: 183.10m<sup>2</sup>  
Terrace area: 181.73m<sup>2</sup>  
Parking area: 56.20m<sup>2</sup>



Common pool area

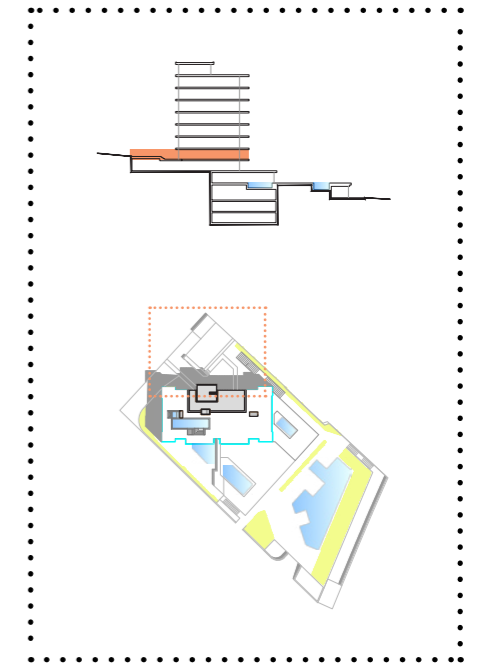
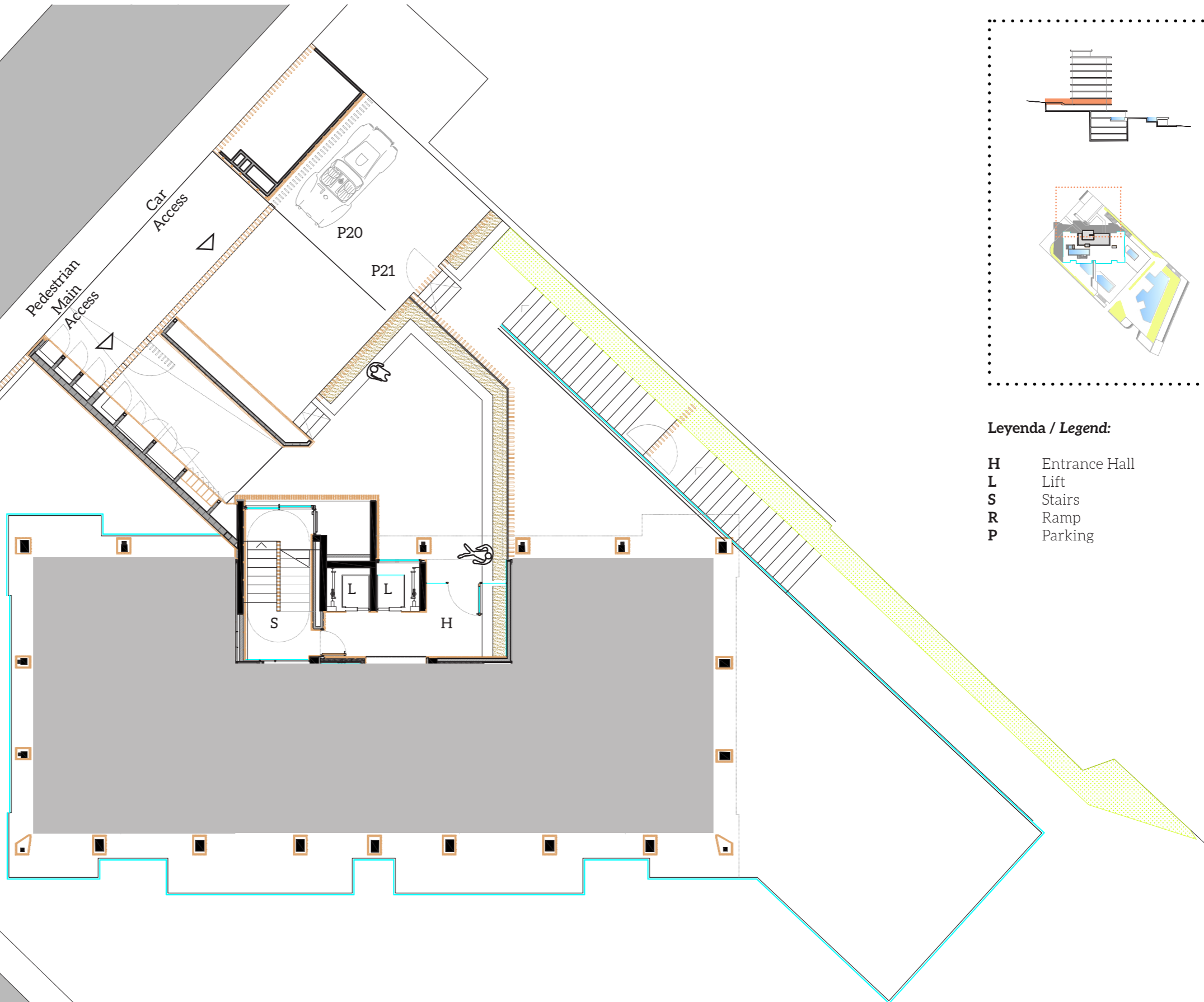
# SECOND FLOOR APARTMENT 200 DETAILED VIEW



**Second Floor Apt. 200/  
Segunda planta Apt. 200**  
Constructed area: 183.10m<sup>2</sup>  
Terrace area: 181.73m<sup>2</sup>  
Parking area: 56.20m<sup>2</sup>



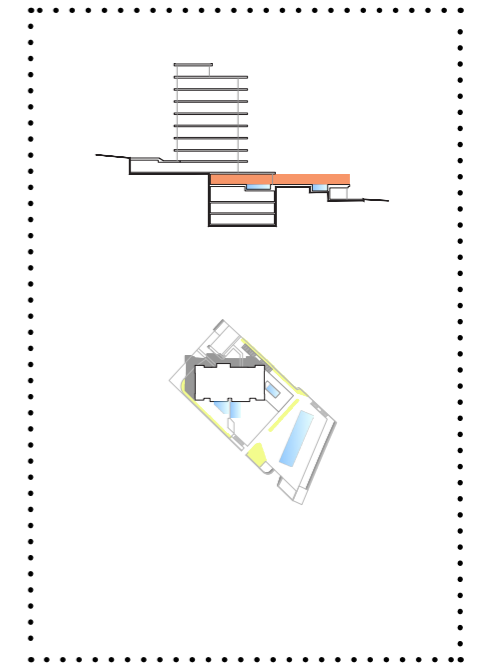
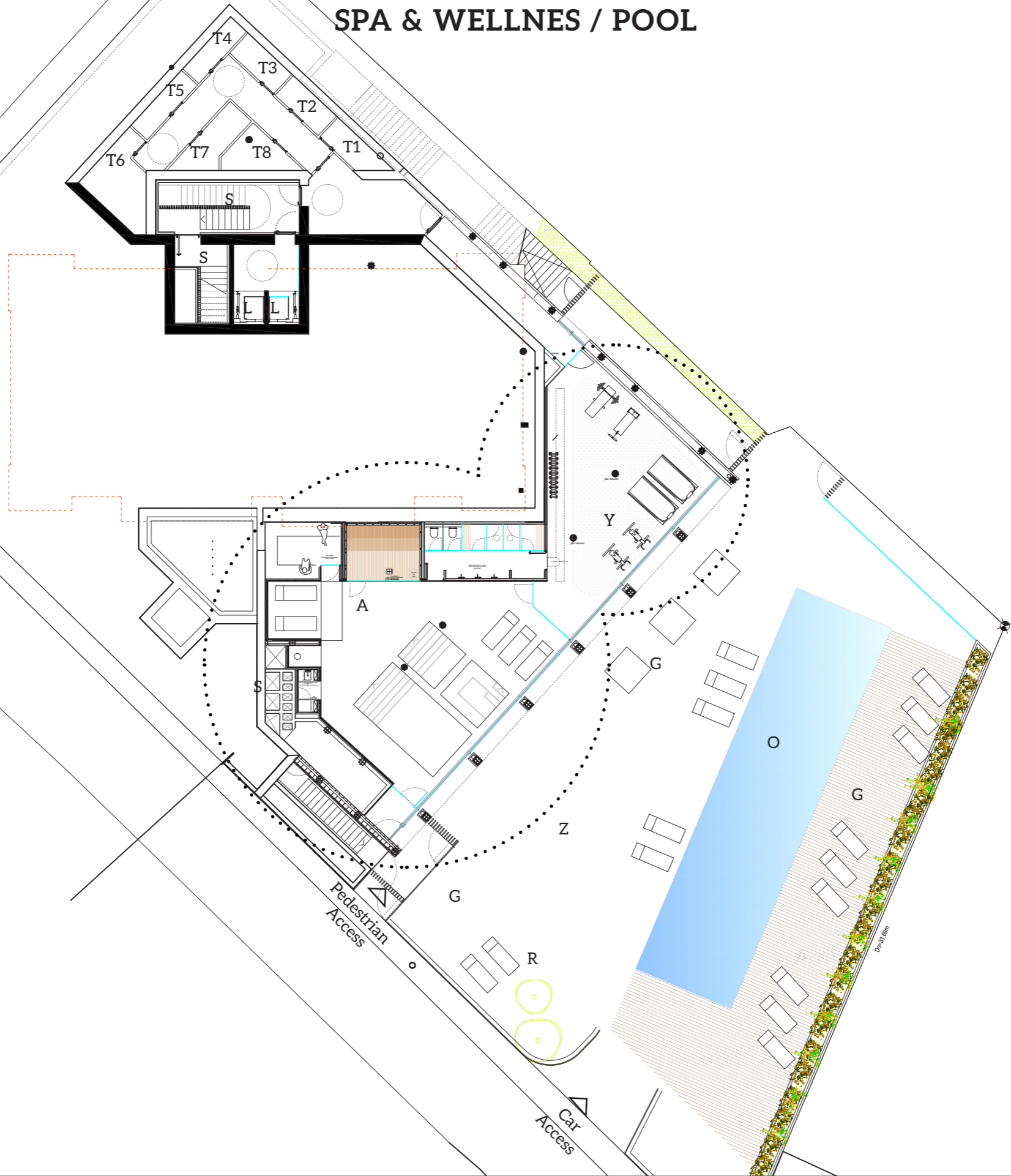
# COMMON AREAS MAIN ENTRANCE



**Leyenda / Legend:**

- H** Entrance Hall
- L** Lift
- S** Stairs
- R** Ramp
- P** Parking

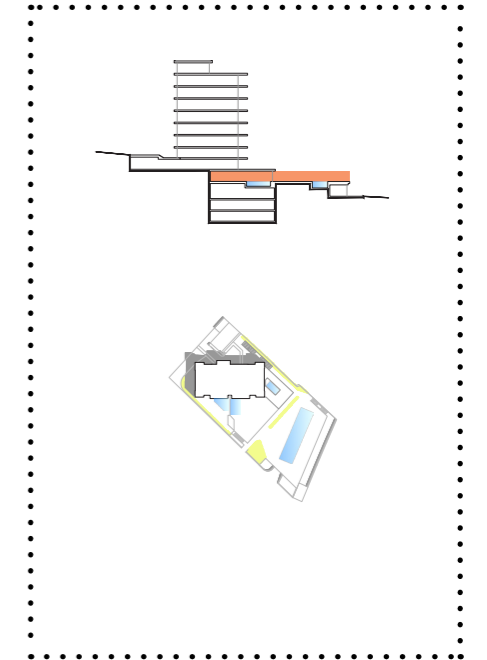
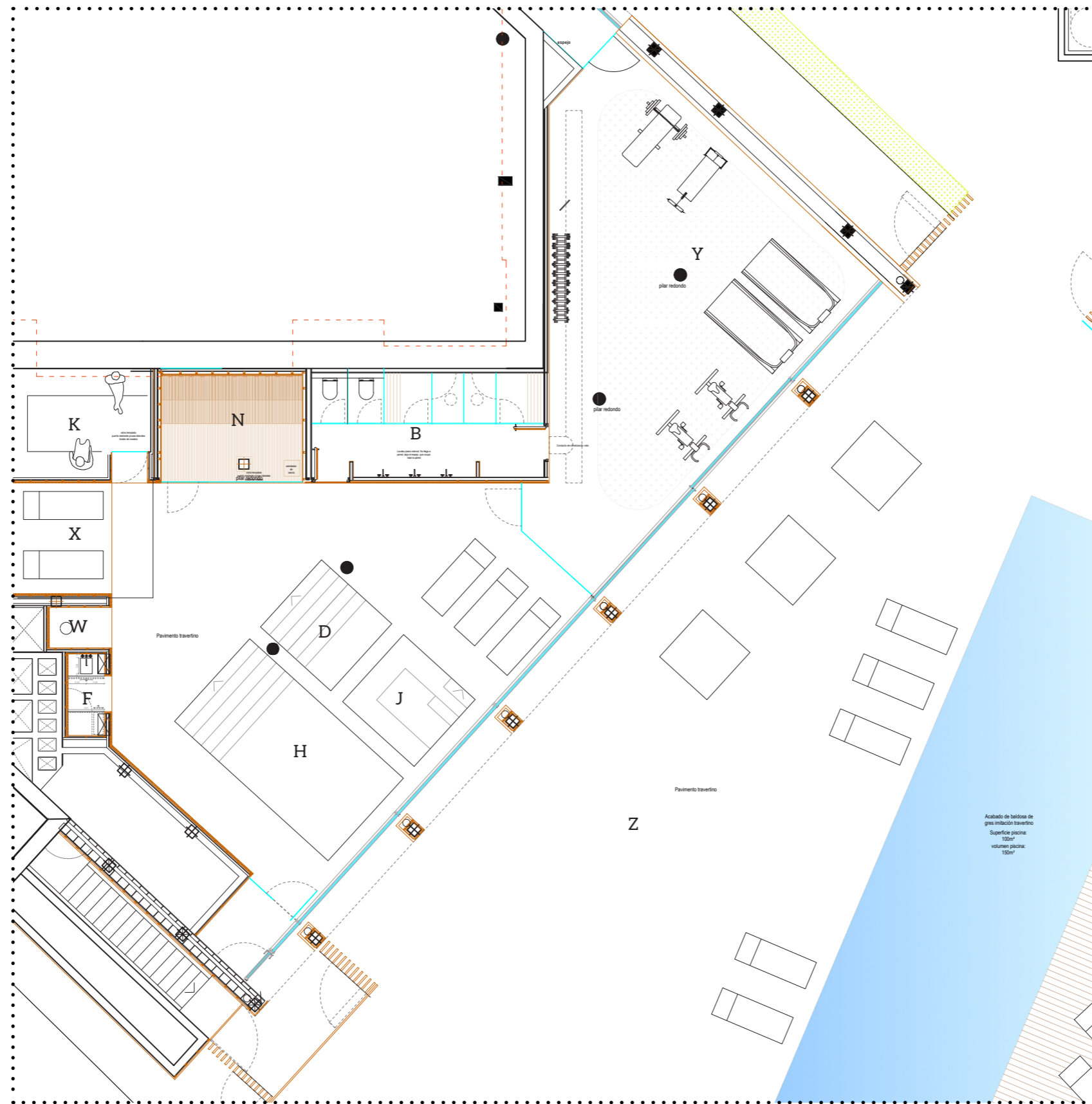
# COMMON AREAS SPA & WELLNES / POOL



**Leyenda / Legend:**

- O** Community Pool
- Z** Terrace
- S** Stairs
- L** Lift
- R** Ramp
- Y** Community Gym
- A** Community Spa
- G** Garden
- T** Storage

# COMMON AREAS SPA & WELLNES



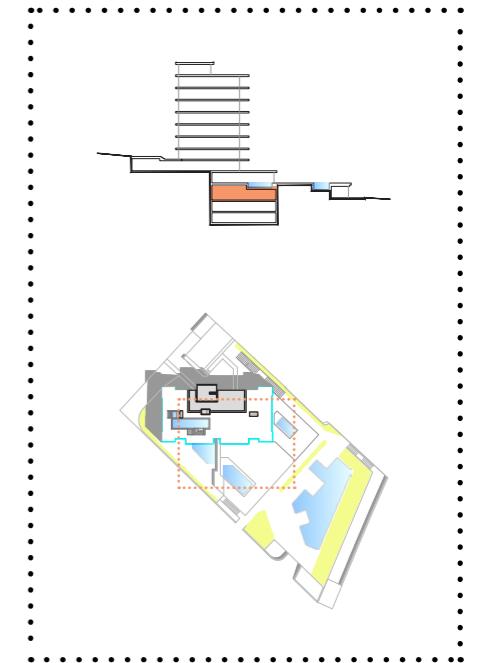
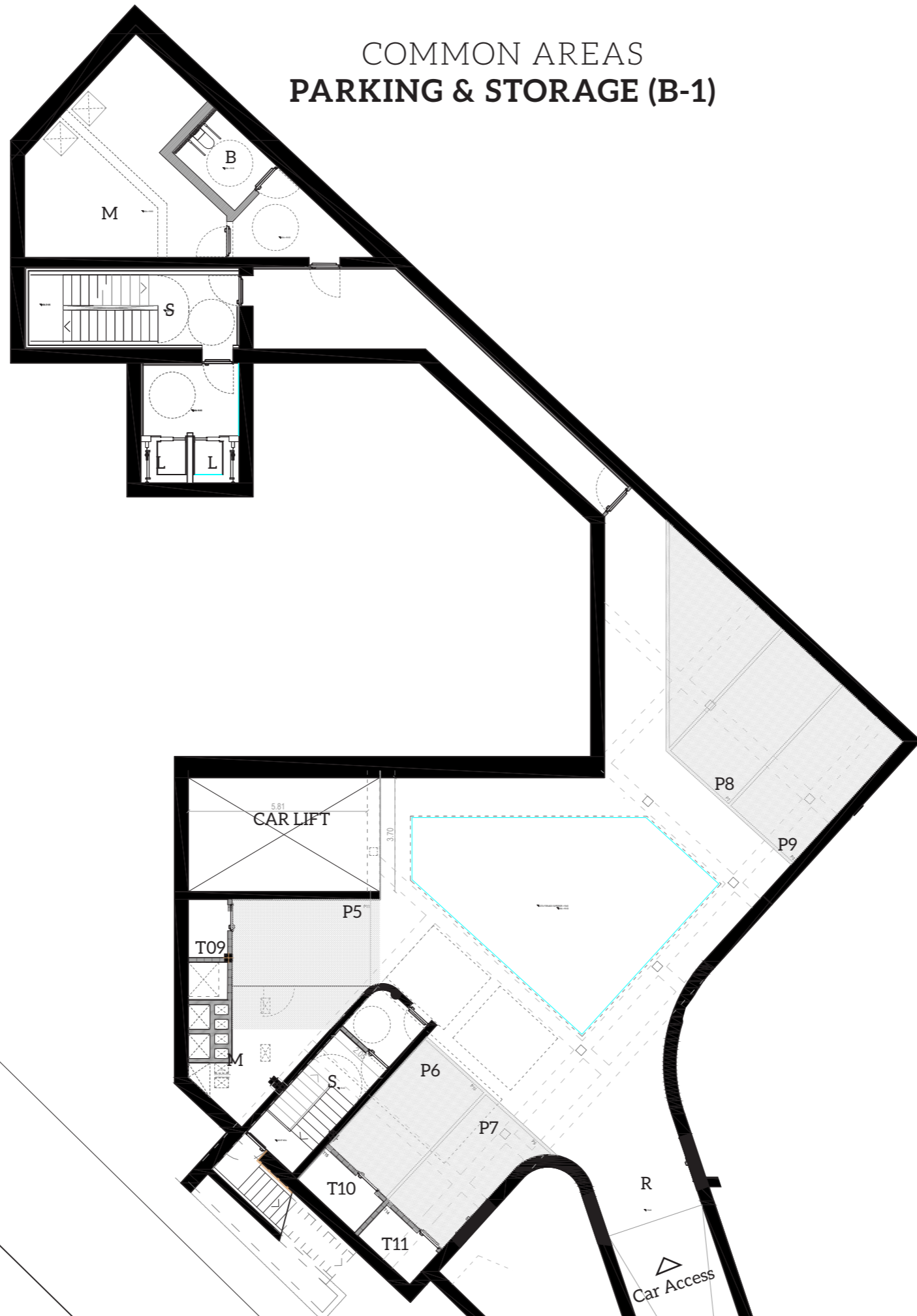
**Legenda / Legend:**

- Y** Community Gym
- A** Community Spa
- G** Garden

**SPA:**

- H** Warm pool
- D** Cold pool
- X** Relaxing area
- K** Turkish bath
- N** Sauna
- W** Sensations shower
- F** Kitchenette
- B** Changing room & Toiletes
- V** Locker room
- Z** Terrace
- S** Stairs
- J** Jacuzzi

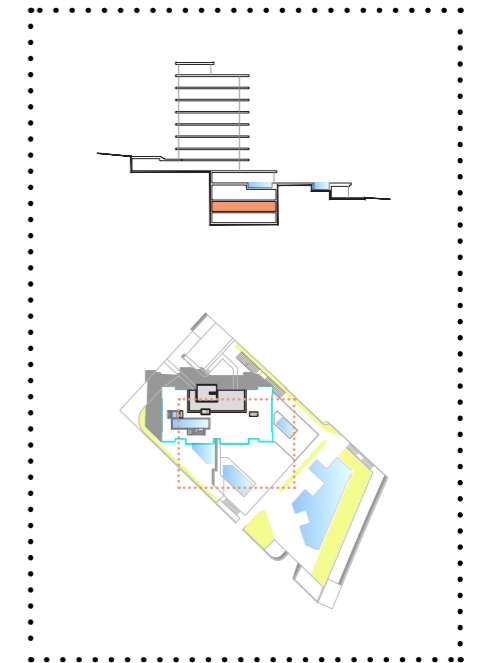
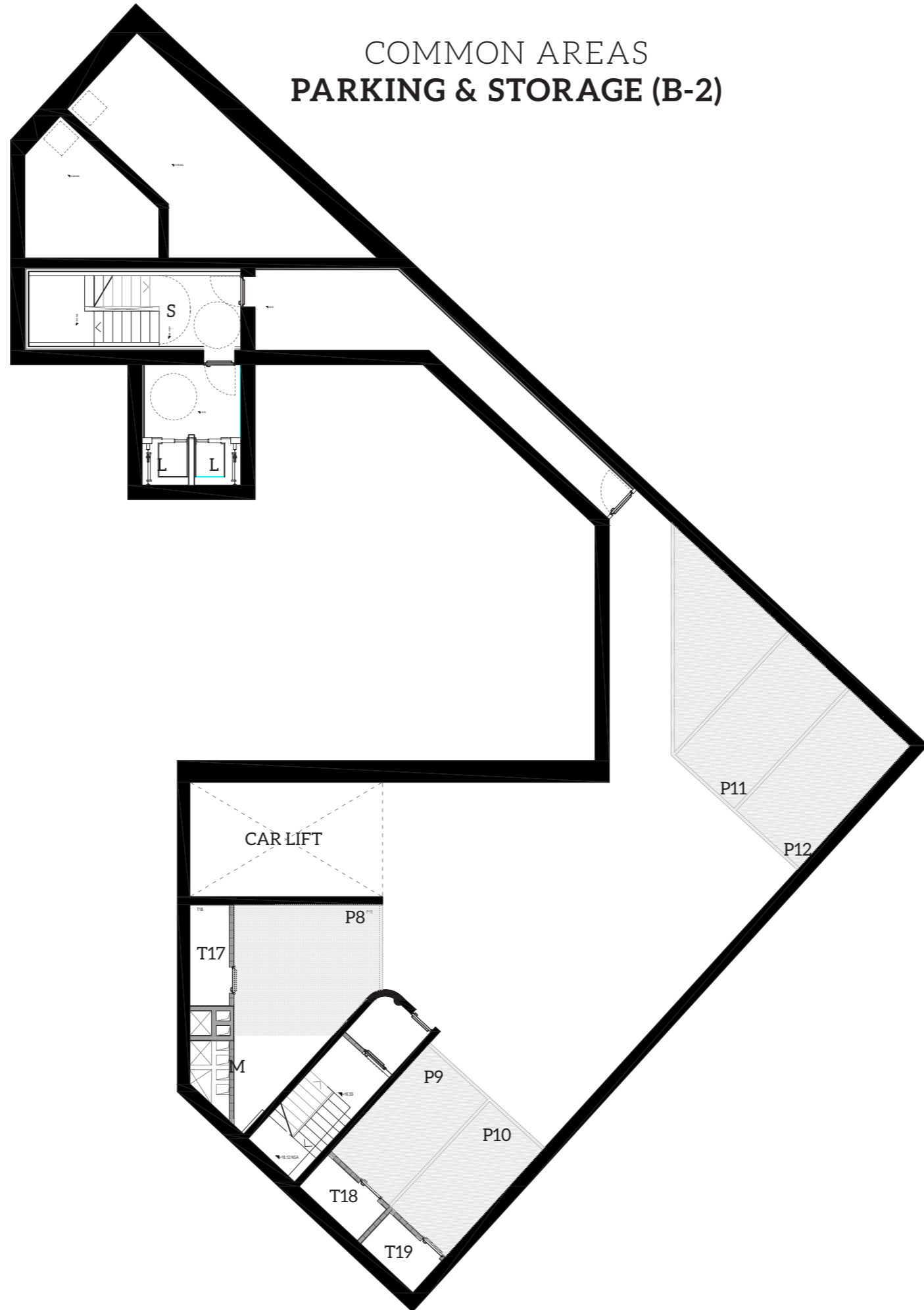
# COMMON AREAS PARKING & STORAGE (B-1)



**Leyenda / Legend:**

- P** Parking Plot
- T** Storage
- S** Stairs
- L** Lift
- B** Toilette
- R** Ramp
- M** Machines and Facilities

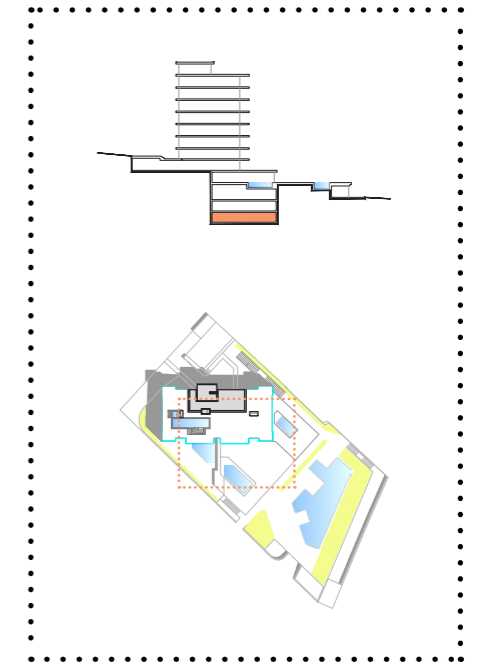
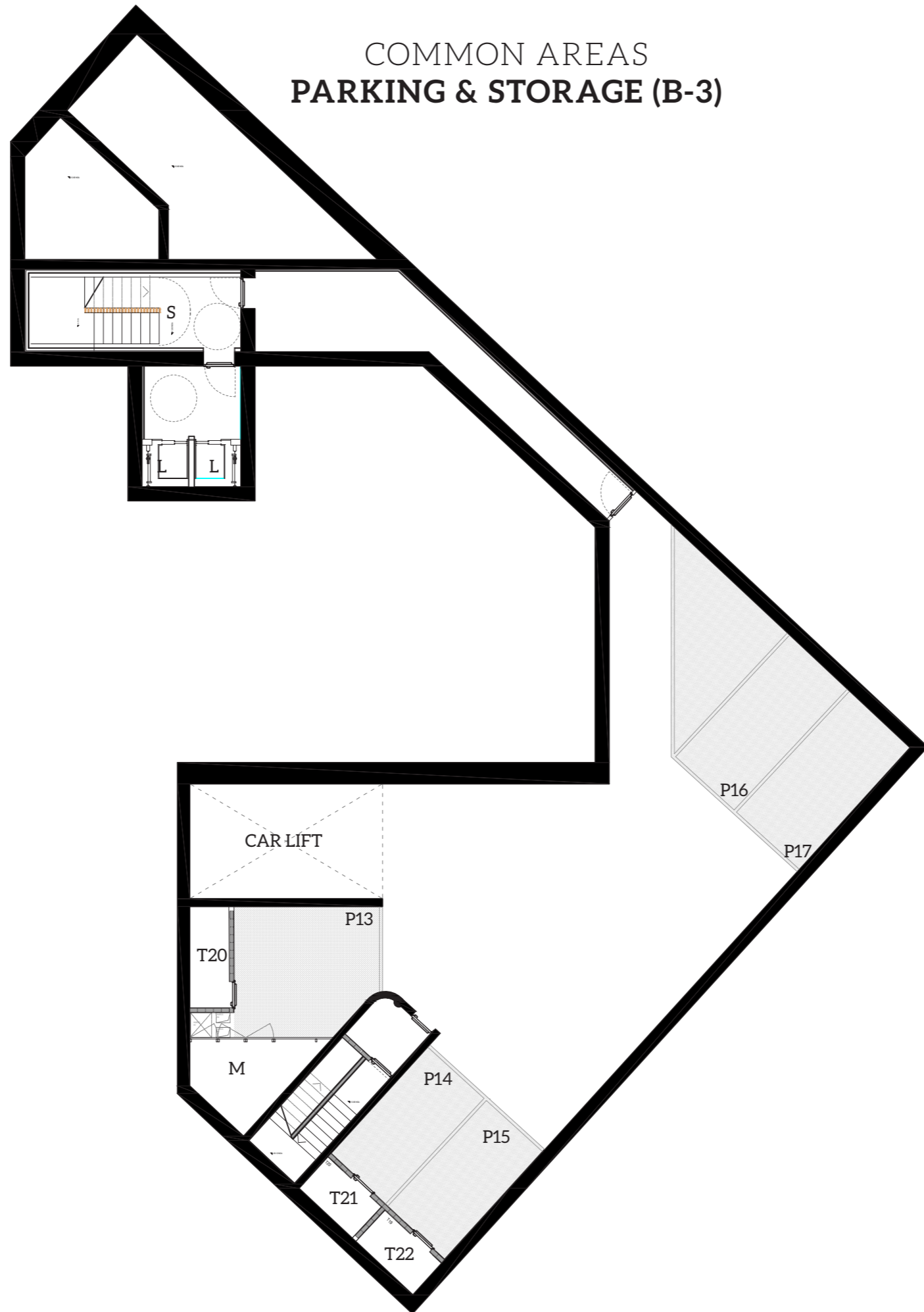
# COMMON AREAS PARKING & STORAGE (B-2)



**Leyenda / Legend:**

- P** Parking Plot
- T** Storage
- S** Stairs
- L** Lift

# COMMON AREAS PARKING & STORAGE (B-3)



**Leyenda / Legend:**

- P** Parking Plot
- T** Storage
- S** Stairs
- L** Lift
- M** Machines and facilities



# FINISHES & QUALITIES

## Kitchen Equipment:

### Base, Wall & Tall Units:

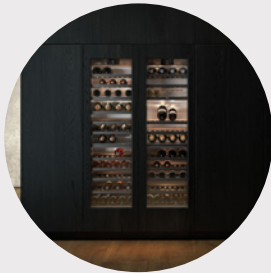
-POLIFORM TRAIL base units or similar with oak plated finish.

### Kitchen Island:

-POLIFORM PHOENIX island or similar matte lacquered finish.  
-MARBLE countertop.

### Appliances:

-BORA PURE cooktop with integrated fan (carbon filter)  
-GAGGENAU 200 black oven and microwaver or similar  
-GAGGENAU 400 built-in side by side fridge and freezer or similar  
-GAGGENAU 200 built-in dishwasher or similar  
-GAGGENAU VARIO 400 wine cabinet or similar  
-DORNBRACHT faucets or similar



Gaggenau Vario 400



Gaggenau 200



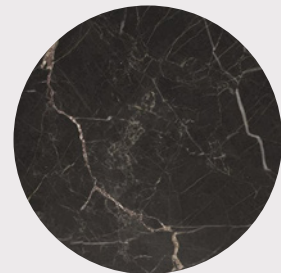
Oak Wood



Dornbracht Faucet



Bora Pure Cooktop + Fan



Marble Countertop

We reserve the right to replace products and/or finishes with equivalents in terms of functionality, design and level.

**Bathrooms:**

*Floor:*

-Natural Travertine stone included floor shower with hidden drain.

*Walls:*

-Bathroom will be covered by a micro cement layer (WHITE MORTEX or similar) on all walls  
-Natural Travertine stone on the shower wall

*Washbasin:*

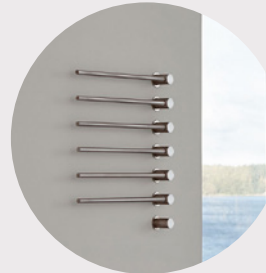
-Natural stone basin or similar

*Fixtures & Fittings:*

- Wall mounted DORNBRACHT or similar faucets.
- Backlighted mirror with cabinet.
- DURAVIT or similar wall hung wc with GEBERIT or similar wall tank.
- DORNBRACHT or similar system of: Round overhead shower ceiling. Cylindrical handshower. Wall-mounted showerselector.
- VOLA or similar heated towel rail.
- GAGGENAU 200 or similar washing machine and tumble dryer.



White Mortex



Vola Heated Towel Rail



Natural Stone Basin



Dornbracht Faucets

*We reserve the right to replace products and/or finishes with equivalents in terms of functionality, design and level.*

**Facilities and installations:**

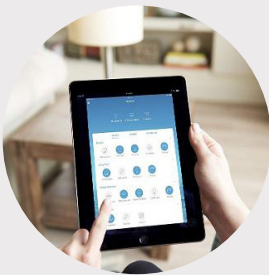
- Water based underfloor heating in all areas produced by aerothermal energy.
- Heating and cooling A/C duct system on all rooms with individual temperature control from private machines.
- Alarm system integrated in the house automation.
- Optional sound system installation
- Fiber internet and TV connection.

**Lighting:**

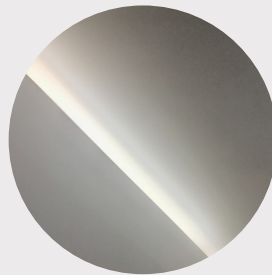
- Iguzzini or similar out-doors lighting.
- LED interior lighting.
- LUTRON or similar house automation system.

**Curtains:**

- Casamante iconique fabric or similar blackout curtain(50% linen 50% cotton)



House automation system



LED interior lighting



Curtains

**Indoors Flooring:**

-Natural Travertine stone tiles of 80x80cm and 20mm thick

**Outdoors Flooring:**

-Natural Travertine stone tiles of 80x80cm 30mm thick non slippery texture

**Interior Carpentry:**

- Security entrance door with oak wood boards finish.
- Interior doors will be made of wooden core and oak wood boards finish, both sliding and side hung doors.
- Custom made wardrobes with closet doors made also of oak wood boards.



Natural Travertine Stone



Oak Wood

**Windows:**

- Open Space/Ottima or similar, high quality aluminium sliding windows with minimal design and highly insulated glass from well known high end brand.
- Sun protection: motorized fabric screen with zip guides to ensure wind resistance.

**Walls:**

Drywalls reinforced by double plasterboard with isolation between them. Painted White RAL 9010 Matte.  
Optional oak wood slats finish\*.

**Ceilings:**

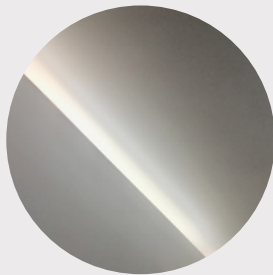
Painted White RAL 9010 Matte.  
Optional oak wood slats finish\*.

**Balustrades:**

Balustrades of 10+10mm laminated glass to achieve maximum clarity of views.



Minimal Aluminium Windows



White ceilings



Oak wood slats



Glass Balustrades

*\*The oak wood paneled walls and ceiling is an additional feature in the interior of the apartments. Please contact us for more details. We reserve the right to replace products and/or finishes with equivalents in terms of functionality, design and level.*